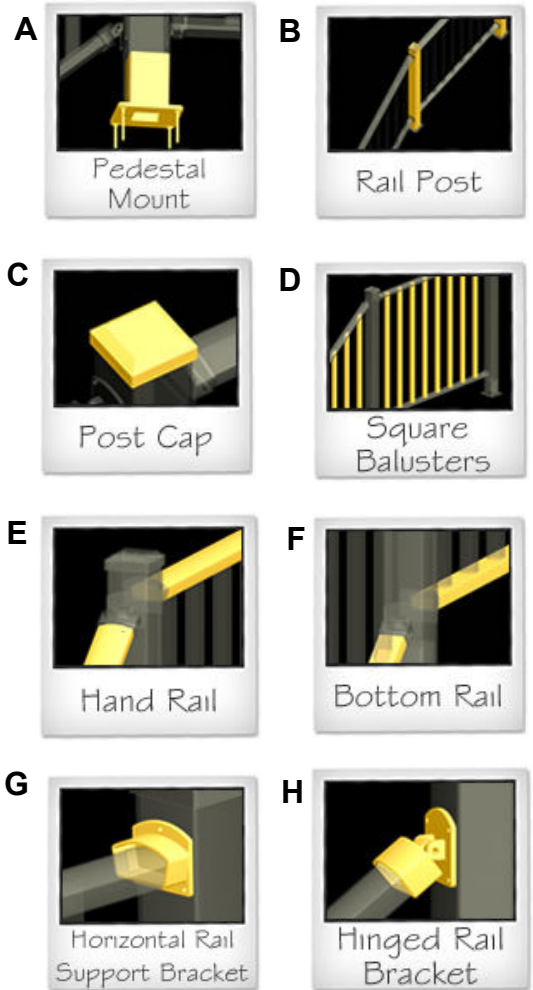
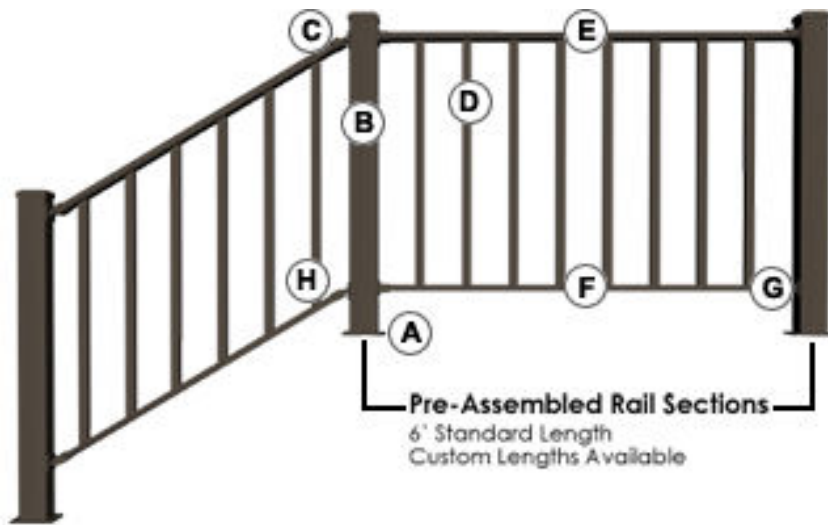


Wahoo Rail Components



Before You Begin:

- Examine the product for damage during transit
- Railing and posts have been pre-cut for your convenience
- Pedestal and Fascia mountings have separate installation instructions

Tools and Materials Needed:

- | | |
|--------------------------|---|
| • Tape Measure | • T-25 Torx Bits |
| • 3/8" Drive Power Drill | • Compound Miter Saw with Carbide Blade |
| • 3/8" Drill Bits | • Thru Bolts (for fascia mount only) |
| • 4 1/4" Carriage Bolts | |

Pedestal (Surface) Mount Installation

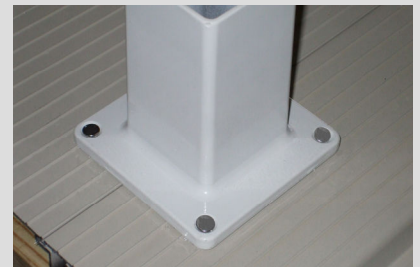
① Your railing sections and posts have been pre-cut and pre-assembled for your convenience. Lay out the posts and rail sections making sure that the end posts are at a wall or where the deck ends or begins, corner posts are at every corner, and center posts are in-between the end and corner posts. (*Illustration A*)

Illustration A



② Measure and place a chalk line or center marks on the deck where the pedestal mounts will be placed. The pedestal mounts are already attached to the posts. Place the pedestal mounts and posts on the deck at the marks. After pre-drilling, use 4 1/4" carriage bolts to secure the pedestal mounts into the deck making sure they are parallel to the edge of the deck. (*Illustration B*) Slide the post skirts on the pedestal to cover the fasteners and to give a finished look to your rail post.

Illustration B



- ③ Insert the top rail & bottom rail edges of your starting rail section into the fixed top & bottom rail mounts on the starting post. Remove the Top & Bottom Rail Mounts from the next post and secure them to the rail edges of the section you just attached to the starter post. Then secure the top & bottom fixed rail mounts back to the post so your first section is complete. *(Illustration C)*

Repeat until all rail sections and posts are installed and Install Post Caps. (Illustration D)

Fascia Mount Installation

- ① Your railing sections and posts have been pre-cut and pre-assembled for your convenience. Lay out the posts and rail sections making sure that the end posts are at a wall or where the deck ends or begins, corner posts are at every corner, and center posts are in-between the end and corner posts. *(Illustration E)*

- ② Measure and place center marks on the rim joists where the fascia mount posts will be placed. Place the fascia/rail posts on the deck at the marks. Drill two holes through the fascia/rail post and the deck rim joist. Drive two thru bolts through the post and the rim joist so that the post is secure. *(Illustration F)*

- ③ Insert the top rail & bottom rail edges of your starting rail section into the fixed top & bottom rail mounts on the starting post. Remove the Top & Bottom Rail Mounts from the next post and secure them to the rail edges of the section you just attached to the starter post. Then secure the top & bottom fixed rail mounts back to the post so your first section is complete. *(Illustration G)*

Repeat until all rail sections and posts are installed and install post caps.

Stair Rail Installation

- ① Follow steps one and two of the pedestal/surface mount installation for the installation of the stair rail posts. Slide the post skirts on the pedestal to cover the fasteners and clip on the post caps to give a finished look to your rail post. When the pedestals and posts installation is complete, check the rise and run of the stairs and determine the proper stair rail angle. Measure between the rail post locations to determine the proper rail lengths. *(Illustration H)*

- ② Cut square balusters to proper angle, top and bottom. If you have a scrap piece of wood, you can cut that to length first to test out your measurements before trying it out on the balusters. The top and bottom rails have been pre-drilled to accept the balusters for your convenience. Assemble the top rail, bottom rail and square balusters using the screws provided with your railing so you have a complete rail section. *(Illustration I)*

- ③ The stair rail posts come with hinged top and bottom rail mount brackets. Insert the finished rail sections into the hinged brackets similar to step three in the pedestal/surface mount installation method *(Illustration J)*

Illustration C

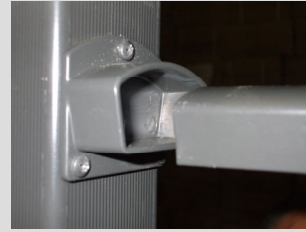


Illustration D



Illustration E

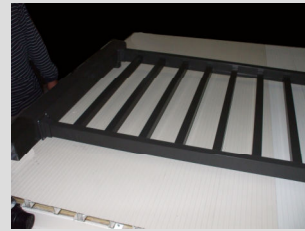


Illustration F



Illustration G



Illustration H

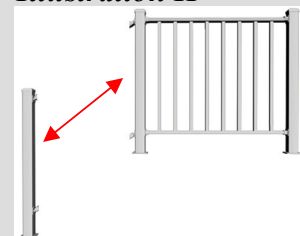


Illustration I



Illustration J

